



FREEHOLD

House - Semi-Detached

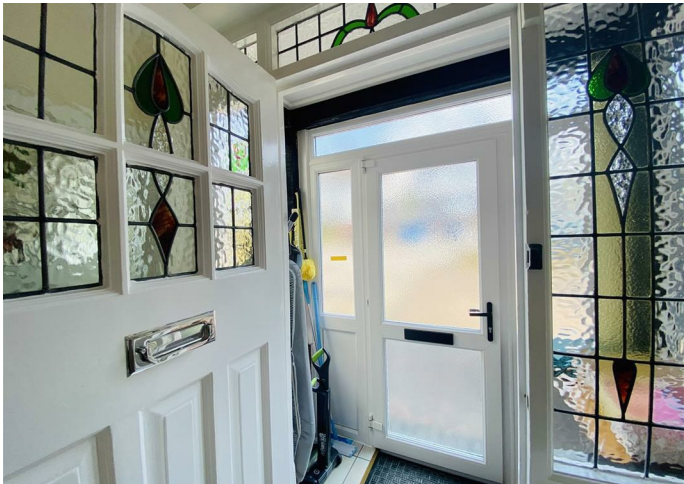
WONDERFULLY KEPT 3 DOUBLE BEDROOM HOUSE IN EDGWARE

Asking Price

£700,000

FEATURES

- 3 Double Bedrooms
- Potential for Further Extensions/Development STPP
- Huge Rear Garden
- Driveway for Multiple Cars
- Garage
- Downstairs W.C.



3 Bedroom House - Semi-Detached located in Edgware

Space Residential are delighted to present this Wonderfully kept 3 double-bedroom house in the heart of Edgware.

Located on a quiet road just off Hale Lane, this huge property consists; a front living room, and dining room with double doors out to a raised patio/deck in the garden with steps down to a large garden, a wide galley kitchen, downstairs guest W.C., 3 double bedrooms (2 with fitted wardrobes along the wall), a large bathroom with separate W.C.

Additionally, there is a huge loft which could be converted into a 4th bedroom subject to planning consent.

The property also has a large garden as well as a garage on the side with its own private driveway which fits multiple cars.



GROUND FLOOR

FIRST FLOOR



Plan produce for SPACE Residential Estate Agent



This floor plan is for illustrative purposes only. Floor areas including total floor area coverings are approximate.

TOTAL FLOOR AREA Sq. meters 103.1 Sq. feet 1109.5

*Total floor area calculated without garage

Call us on

0208 906 2222

info@spaceresidential.com

spaceresidential.com

Council Tax Band

E

Energy Efficiency Rating		Current	Potential
<i>Very energy efficient - lower running costs</i>			
(92 plus)	A		86
(81-91)	B		
(69-80)	C		
(55-68)	D	62	
(39-54)	E		
(21-38)	F		
(1-20)	G		
<i>Not energy efficient - higher running costs</i>			
England & Wales		EU Directive 2002/91/EC	

Agents Note: Whilst every care has been taken to prepare these particulars, they are for guidance purposes only. All measurements are approximate and are for general guidance purposes only and whilst every care has been taken to ensure their accuracy, they should not be relied upon and potential buyers are advised to recheck the measurements.

